

# 2021 Chapter Operations

Beta Alpha Psi- Eta Theta Chapter

# Beta Alpha Psi - Eta Theta Chapter

- ▶ **Professional Development, Leadership, and Service at the University of Wisconsin - Milwaukee**
  - Located in Milwaukee, WI, the Eta Theta Chapter is encompassed by a unique and colorful city with many of its own traditions and a culture of support. The Eta Theta Chapter utilizes Milwaukee's plethora of diverse opportunities to curate professional, social, and service events that keep members motivated and engaged in Beta Alpha Psi.

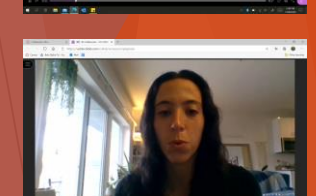
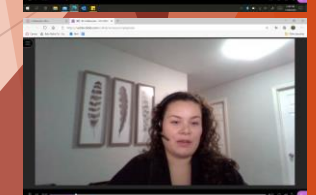
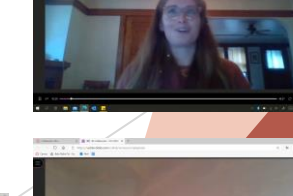
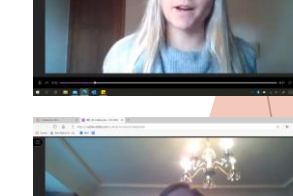
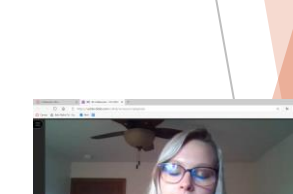
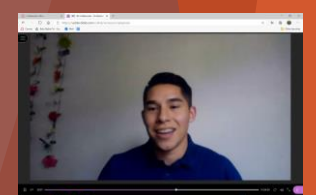
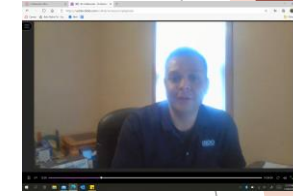
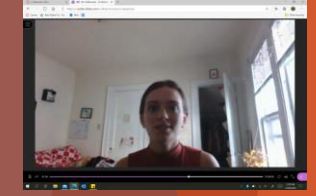
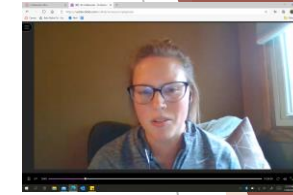
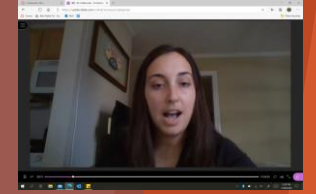
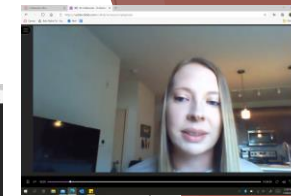
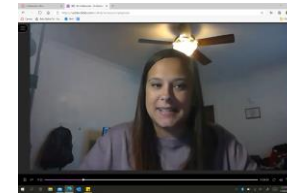
# Eta Theta Chapter: COVID-19 Resilience

- Each semester, the Eta Theta Chapter hosts the following exciting events for members:
  - Presentations from single Professional Partners
  - Beta Brewers and Bucks Game
  - Beta Live Auction
- Due to COVID-19, the Eta Theta Chapter had to stray from our traditions and be resilient as we found ways to still provide engaging and exciting events through a new virtual format
  - Professional Panel Style Events
  - Beta Duck Race
  - Beta Food Pantry Service



# Professional Panel Style Events

- ▶ **Who:** All members, candidates, and two to three professional partners were invited to this event.
- ▶ **What:** During these events, each firm answered commonly asked questions in order for students to gain knowledge regarding the general industry as well as information related to specific firms. Through a virtual format, all attendees were encouraged to interact with one another and establish connections to build upon throughout the semester.
- ▶ **When & Where:** This year these events were held via our University's platform Collaborate Ultra.





# Beta Duck Race

- ▶ **Who:** All members, candidates, and professional partners were invited to this event.
- ▶ **What:** Board Members raced rubber ducks. Each duck represented a team, firms paid to have duck team raced.
- ▶ **When & Where:** Board Members traveled to a local river during the fall semester of 2020. Candidates, members, and firms tuned into the event virtually.

# Beta Food Pantry Service

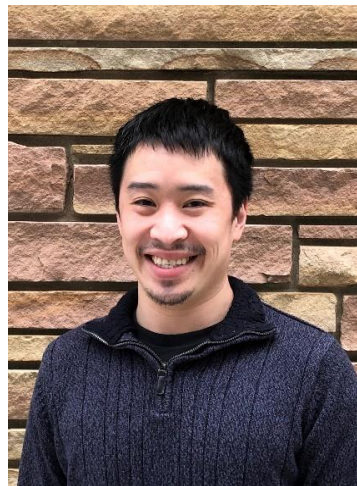
- ▶ **Who:** All members and candidates were encouraged to go out and help.
- ▶ **What:** Members and candidates signed up to safely work to stock and dispense food into bags for those in need. This opportunity made for a meaningful way to give back to the community during an unprecedented time.
- ▶ **When & Where:** This service opportunity took place at the Interchange Food Pantry located near downtown Milwaukee.





# Traditions Upheld in Innovative Ways

- ▶ The Eta Theta Chapter relied on the innovation of our members, faculty advisor, and candidates to create new experiences
- ▶ The unique culture of University of Wisconsin-Milwaukee and the Eta Theta Chapter offer more than just the Bucks and Brewers
- ▶ Opportunities to make new traditions
  - ▶ Continued virtual opportunities to make Eta Theta Chapter more accessible to students and firms
  - ▶ Emphasizing service and giving back to the community that supports us



On Behalf of The Eta Theta Chapter,  
Thank You For Your Time