



2025 ANNUAL ACCOMPLISHMENTS

BETA ALPHA PSI INTERNATIONAL

Leading with Purpose. Driving Change.



 @BetaAlphaPsiIntl

 @_BetaAlphaPsi

 @BetaAlphaPsiIntl

Table of Contents

4 About Us

6 Letter from the President

8 Board of Directors

9 Chapter Advocates

10 Professional Partners

12 2024-2025 Strategic Priorities

13 2025 Mid-Year Meetings

16 2025 Annual Meeting

19 Awards

Outstanding Dean

Medal of Inspiration, sponsored by AICPA
Foundation

President's Award

Outstanding Faculty Advisors, sponsored by RSM
LLP

Lifetime Service

Dean's List

26 Competitions

Best Practices, sponsored by Deloitte LLP

Leadership Awards, sponsored by EY LLP

Platinum Challenge, sponsored by KPMG LLP

Project Run With It (PRWI), sponsored by Moss
Adams x Baker Tilly

VITA Awards, recognized by IRS

34 Recognition



About **Beta Alpha Psi**

Beta Alpha Psi is an international honors organization with over 300 chapters and 380,000 members inducted since our formation. We support students who pair academic excellence with ethical leadership and service.

Our members are tackling some of the profession's most urgent challenges. At a time when trust in institutions is strained, they help rebuild it through integrity, transparency, and accountability. Whether analyzing data, advising clients, or mentoring peers, they model the leadership our profession—and the public—needs.

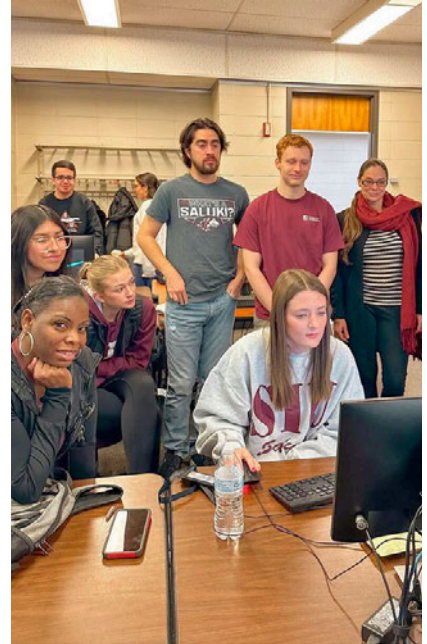
Each year, chapters lead nearly 2,000 service projects—from free tax help and financial literacy workshops to nonprofit partnerships and local initiatives. Service isn't extra—it's expected. It shows how we connect knowledge with purpose.

Our model is rooted in service and built to grow. We're opening more doors for students to realize their potential, build connections, and give back—strengthening trust and stability across the profession.

We don't just prepare students for careers—we prepare them to make a difference by showing up, giving back, and doing the work.

*To review the Beta Alpha Psi
audited financial statements,
visit [BAP.org](https://www.bap.org).*





Letter from the President

It has been my honor to serve as President of Beta Alpha Psi this past year. As I look back, I am proud of the progress we have made together and inspired by the resilience of our community. Even as the world continues to face economic uncertainty, shifting professional landscapes, and the pandemic's lingering effects, Beta Alpha Psi has remained a beacon of stability, grounded in its mission, strengthened by its members, and guided by its strategic vision.

When we adopted our new strategic plan last year, we did so with clarity of purpose and a commitment to accountability. By assigning clear responsibilities at every level, we have been able to turn our vision into measurable achievements.

One of the most encouraging signs of growth has been the steady increase in our candidate count. After reaching a low during the pandemic, candidate numbers have risen 40% over the past three years. This rebound reflects both renewed interest in our mission and the effectiveness of our outreach and support systems. The reputation of Beta Alpha Psi continues to attract talented members eager to contribute.

Financial stewardship has also been a major focus. Through our renewed partnership with the American Accounting Association (AAA), we reduced costs associated with our annual meeting. Our audited financial statements for fiscal year 2025, along with this year's budget, show a modest increase in net assets, strengthening our foundation for the future. We are especially grateful to the AAA, whose mission, vision, and values so closely align with ours.



Dr. Patricia Poli, CPA

Associate Professor Emerita
of Accounting
Dolan School of Business
Fairfield University



Leading with Purpose.
Driving Change.

Member engagement has flourished as well. Attendance at our annual meeting grew this year, underscoring the value members find in these gatherings. More than opportunities for education, they are a chance to connect, share ideas, and reaffirm our collective purpose. Engagement is the lifeblood of any association, and I am proud to see such energy and commitment.

Our CPE offerings expanded significantly this year. At the annual meeting, all professional sessions and keynotes qualified for CPE credit, including our first alumni session. Recognizing the vital role of continuing education in career growth, we offered sessions spanning accounting, finance, and IT—opening doors to new opportunities and addressing real-world challenges.

Our decision to welcome Accreditation Council for Business Schools and Programs (ACBSP)-accredited schools is already showing results. We have reached an exciting milestone with our first petition from an ACBSP-accredited school. This marks a strong vote of confidence in the recognition we are building across the academic community. With ACBSP schools spanning more than sixty countries, our international reach is set to grow even further, opening the door to more members and a stronger global reach.

Behind the scenes, we made important operational advances. Working with a grant writer, we developed templates and procedures for future applications, laying the groundwork for future funding opportunities. While less visible than our annual meeting, these efforts are critical for long-term sustainability and growth.

Taken together, these accomplishments illustrate not only what Beta Alpha Psi achieved this past year but also the strength of the foundation we are building for the future. Our resilience in the face of global uncertainty, our commitment to service, and our ability to adapt and grow all reflect the vitality of this organization.

As I conclude my term as President, I feel deep gratitude and excitement for the road ahead. This past year has been a remarkable journey and together we have accomplished much.

To our members, Executive Office staff, Past President (Mark Myring), President-Elect (Raymond Elson), the Board of Directors, Chapter Advocates, Faculty Advisors, Professional Partners, and the AAA, thank you. Your passion, commitment, and hard work fueled our success.

I also want to recognize the contributions of our Annual Meeting Chair, Dori Danko, and the incredible students who stepped up as general session emcees and keynote introducers. You brought energy and inspiration to our gathering.

Every milestone this year reflects the collective spirit, collaboration, and dedication that makes Beta Alpha Psi so special. It has been an honor to serve as your President. The future of Beta Alpha Psi is bright, and I am confident that this community will continue to grow and make a positive impact.

With best wishes for continued success,



Dr. Patricia Poli, CPA
Beta Alpha Psi President, 2024-2025

“*Every milestone this year reflects the collective spirit, collaboration, and dedication that makes Beta Alpha Psi so special. Our resilience in the face of global uncertainty... reflects the vitality of this organization.*”

Board of Directors

LEADERS WHO SHAPE BETA ALPHA PSI'S MISSION AND IMPACT



Dr. Patricia Poli, CPA
President



Dr. Raymond Elson, CPA/CITP, CGMA
President-Elect



Dr. Mark Myring
Past President



Dr. Sridhar Sundaram, MBA
Dean Representative



Dr. Brian McGuire
Director of Administration



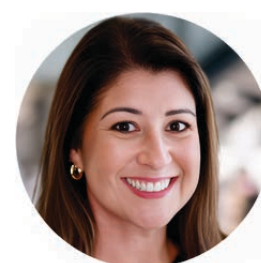
Dr. Teresa Conover
Director of Global Activities



Danielle Bradley, MBA
At-Large Director for
Operational Sustainability



Lindsay Patterson, CIA, CPA
At-Large Director



Leanne Lutkus
Professional Partners Chair



Kelly Rath, SHRM-SCP
Professional Partners
Chair-Elect



Dr. Connie McKnight, CPA
3rd-Year
Chapter Advocate



Avneet Nagra
3rd-Year
Alumni Advocate



Mangala Prasethia, MBA
3rd-Year
Alumni Advocate



Chad Kelsey
2nd-Year Alumni Advocate

CHAPTER ADVOCATES



**Dr. Connie McKnight,
CPA**

3rd-Year
Chapter Advocate
Southwest Region



Avneet Nagra

3rd-Year
Chapter Advocate
Atlantic Coast Region



**Dr. Amelia Hart,
CPA, CGMA**

2nd-Year
Chapter Advocate
Southeast Region



Tammy Perri, CPA

2nd-Year
Chapter Advocate
Western & Northwest
Regions



Dr. Fred Ng

1st-Year
Chapter Advocate
Oceania Region



**Dr. Kirsten M.
Rosacker, CPA**

2nd-Year Chapter
Advocate Rocky
Mountain/Missouri
Valley Regions



**Dr. Jason Stanfield,
CPA**

3rd-Year
Chapter Advocate
Midwest Region

ALUMNI ADVOCATES



**Mangala Prasetya,
MBA**

3rd-Year
Alumni Advocate



Chad Kelsey

2nd-Year Alumni
Advocate



Amber Young

1st-Year Alumni
Advocate and Taskforce
Chair



Jonathan Lee

Mid-Year
Representative
Midwest/Southwest/
Rocky Mountain Regions



Kristina Jiang

Mid-Year
Representative
Northwest/Southeast/
Western Regions



Amneek Nagra

Mid-Year
Representative
Atlantic Coast Region

EXECUTIVE OFFICE



Margaret Fiorentino

Executive Director



Lisa Wicker, MBA

Manager, Chapter
Services



Tricia Weston

Marketing Coordinator

Professional Partners

ESSENTIAL TO THE SUCCESS OF OUR INITIATIVES AND COMPETITIONS

Beta Alpha Psi's Professional Partners are integral to the organization's success, sharing their expertise, networks, and resources to enhance member experiences. They play a key role in securing speakers, leading insightful presentations, and serving as judges for the annual Best Practices competition and other awards. Many also take their support further by sponsoring specific competitions or initiatives, recognizing and rewarding excellence within the organization. In addition to their active involvement, their financial contributions help make Beta Alpha Psi's mid-year and annual meetings more accessible, ensuring members can continue to benefit from these valuable opportunities.





FIRMS AND INDUSTRY

Andersen
Aprio
BDO USA, LLP
CBIZ and Mayer Hoffman McCann P.C. (MHM)
Deloitte LLP
EY LLP
Fifth Third Bank
Grant Thornton LLP
KPMG LLP
Moss Adams LLP x Baker Tilly
MYOB Australia and New Zealand
PwC
Protiviti Inc.
RSM US LLP
Skillfully
Wipfli LLP
Xero
Your Part-Time Controller (YPTC)



ASSOCIATIONS/NOT-FOR PROFITS

Accounting & Financial Women's Alliance (AFWA)
AGA
AICPA & CIMA
American Accounting Association (AAA)
Center for Audit Quality (CAQ)
Chartered Accountants Australia and New Zealand (CAANZ)
Educational Foundation for Women in Accounting (EFWA)
Graduate Management Admission Council (GMAC)
Institute of Management Accountants (IMA)
NASBA Center for the Public Trust
The Institute of Internal Auditors (IIA)
The PhD Project



PROFESSIONAL EXAM PROVIDERS

Becker Professional Education
Gleim Exam Prep
UWorld



STATE SOCIETIES

Alabama Society of CPAs (ASCPA)
California Society of Certified Public Accountants (CalCPA)
Maryland Association of Certified Public Accountants (MACPA)
New Jersey Society of Certified Public Accountants (NJCPA)
North Carolina Association of Certified Public Accountants (NCACPA)
Texas Society of Certified Public Accountants (TXCPA)
Washington Society of Certified Public Accountants (WACPA)

2024-2025 Strategic Priorities

WE'RE FOCUSED ON HELPING OUR CHAPTERS DO MORE, CONNECT BETTER, AND MAKE A REAL DIFFERENCE. HERE'S HOW WE'RE MOVING FORWARD.

Membership Experience

We're working to make the BAP experience more valuable and welcoming for every member. This includes improving access to tools and resources, offering meaningful event experiences, and supporting chapters with guidance and connection opportunities.

Professional Engagement

We're building stronger relationships between members and the professional world. By expanding and diversifying our Professional Partner network, we're creating new ways for students and firms to connect and grow together.

Growth & Fiscal Sustainability

We're focused on thoughtful growth and long-term sustainability. That means broadening our reach, welcoming new chapters and members, and making smart use of our financial resources.

Societal Impact

We're committed to supporting chapters as they make a difference in their communities. From service projects to educational outreach, we want to recognize and amplify the positive work our members are doing.

Beta Alpha Psi Chapter Activity





2025 Mid-Year Meetings

WITH 1,071 TOTAL ATTENDEES, OUR MID-YEAR MEETINGS EMPHASIZED **LEARNING, CONNECTION, AND SERVICE THROUGH BOOKS OF HOPE: INSPIRING THE FUTURE, SUPPORTING CHILDREN'S LITERACY WITH DONATIONS TO PATH TO SHINE.**

ATLANTA, GA

JANUARY 24-25, 2025

Co-host Chapters

Kennesaw State University, Iota Tau chapter
Valdosta State University, Mu Zeta chapter

Keynote Speaker

Lori Kaczynski, SVP, Chief Audit, Risk, and Compliance Officer, Graphic Packaging International

Best Practice Winners

Impacting Connections in Your Chapter

1st Place - Kent State University, Beta Psi chapter
2nd Place - Manhattan University, Lambda Pi chapter
3rd Place - Florida State University, Beta Rho chapter

Impacting Your Profession

1st Place - University of North Florida, Xi Eta chapter
2nd Place - Florida International University, Eta Iota chapter
3rd Place - University of Arkansas, Alpha Iota chapter

Impacting Your Community

1st Place - University at Buffalo, Zeta Theta chapter
2nd Place - University of Arkansas, Alpha Iota chapter
3rd Place - Oklahoma State University, Chi chapter

DENVER, CO

FEBRUARY 14-15, 2025

Co-host Chapters

University of Nevada, Las Vegas, Theta Omicron chapter
University of Colorado, Denver, Theta Sigma chapter

Keynote Speaker

Dr. Kimberlee Ann Brannock, CGRCM-IT, CISA, CSOXM, JD, PMP, Distinguished Technologist and Cyber Security Strategist, HP

Best Practice Winners

Impacting Connections in Your Chapter

1st place - California State University, Fullerton, Delta Beta chapter
2nd place - University of Nevada Las Vegas, Theta Omicron chapter
3rd place - Bowling Green State University, Alpha Upsilon chapter

Impacting Your Profession

1st place - California State University, Fullerton, Delta Beta chapter
2nd place - University of North Alabama, Xi Zeta chapter
3rd place - California State University Northridge, Epsilon Chi chapter

Impacting Your Community

1st place - The University of Alabama, Alpha Beta chapter
2nd place - University of San Diego, Zeta Kappa chapter
3rd place - University of Central Florida, Epsilon Gamma chapter

DALLAS, TX

FEBRUARY 21-22, 2025

Co-host Chapters

University of Texas at Arlington, Gamma Phi chapter
University of North Texas, Beta Pi chapter

Keynote Speaker

Tom Walker, CFO, Dallas Cowboys

Best Practice Winners

Impacting Connections in Your Chapter

1st place - Louisiana State University, Phi chapter
2nd place - University of Nebraska – Lincoln, Delta Omicron chapter
3rd place - Texas State University, Kappa Eta chapter

Impacting Your Profession

1st place - University of Central Arkansas, Theta Lambda chapter
2nd place - Southern Illinois University at Carbondale, Gamma Zeta chapter
3rd place - University of Nebraska – Lincoln, Delta Omicron chapter

Impacting Your Community

1st place - The University of Alabama, Alpha Beta chapter
2nd place - University of San Diego, Zeta Kappa chapter
3rd place - University of Central Florida, Epsilon Gamma chapter

MELBOURNE, AUSTRALIA

APRIL 14-16, 2025

Co-host Chapters

Monash University, Xi Epsilon chapter
Swinburne University of Technology, Xi Sigma chapter

Keynote Speakers

David Banger, Change Lead
Henrietta Rothchild, Kordamentha
Kayur Patel, PwC

Best Practice Winners

Impacting Connections in Your Chapter

1st place – The University of Auckland, The Auckland chapter
2nd place – University of Technology Sydney, Upsilon Tau Sigma chapter

Impacting Your Profession

1st place – Monash University, Xi Epsilon chapter
2nd place – University of Technology Sydney, Upsilon Tau Sigma chapter

Impacting Your Community

1st place – Monash University, Xi Epsilon chapter
2nd place – The University of Sydney, Lambda Omega chapter



Host Chapter Sponsor Wipfli LLP

Breakfast Sponsor Iowa State University

Lunch Break Sponsor CohnReznick

Coffee Break Sponsors Educational Foundation for Women in Accounting (EFWA), NASBA Center for the Public Trust, The Institute of Internal Auditors (IIA), UWorld



2025 Annual Meeting

CENTERED ON THE THEME **LEADING WITH PURPOSE. DRIVING CHANGE,** THE ANNUAL MEETING UNITED MEMBERS FOR PROFESSIONAL DEVELOPMENT, CHAPTER SHOWCASES, AND SERVICE, REFLECTING BETA ALPHA PSI’S COMMITMENT TO LEADERSHIP, LEARNING, AND IMPACT.

SAN ANTONIO, TX
AUGUST 14-16, 2025

Co-chairs

Dr. Patricia Poli, CPA, President, Beta Alpha Psi
Dori Danko, CPA, Accounting Instructor, Grand Valley State University

Keynote Speakers *(left to right)*

Ron Skillens, CPA, CHC, CHPC - Chief Compliance and Privacy Officer, UC San Diego Health
Alicja Arnold, CISA, CFE - Manager of Data Analytics within Internal Audit at Protective Life Corporation
Nicole DeRosa CPA, MAcc - Director of Tax, SKC, Brand Ambassador, UWorld Accounting



SPECIAL THANKS TO OUR SPONSORS AND EXHIBITORS

COMPETITION SPONSORS

KPMG LLP	Platinum Challenge Awards
Deloitte LLP	Best Practices Awards
Moss Adams x Baker Tilly	Project Run With It (PRWI)
RSM US LLP	Outstanding Faculty Advisor Awards
EY LLP	Leadership Awards
AICPA Foundation	Medal of Inspiration Award, Financial Hardship Membership Grants and Travel Stipends
Dr. Eric Jack	Dean's List Awards

SPONSORS AND EXHIBITORS

AICPA & CIMA	Exhibitor
AGA	Exhibitor
American Accounting Association (AAA)	Exhibitor
Aprio	Lanyard Sponsor and Exhibitor
Becker Professional Education	Coffee Break Sponsor, Advertising Sponsor and Exhibitor
CohnReznick	Mobile App Sponsor
Deloitte LLP	WiFi Sponsor
EY LLP	Awards Lunch Sponsor
Fifth Third Bank	360 Booth Sponsor and Exhibitor
Florida International University (FIU) Mac Program	Exhibitor
Gleim Exam Prep	Alicja Arnold, CISA, CFE Keynote Speaker Sponsor and Exhibitor
The Institute of Internal Auditors (IIA)	Advertising Sponsor and Exhibitor
Iowa State University Ivy College of Business	Exhibitor
Murray State University Graduate Programs	Exhibitor
NASBA Center for the Public Trust	Exhibitor
Texas Society of CPAs (TXCPA)	Advertising Sponsor
U. of North Georgia, Mike Cottrell College of Business	Exhibitor
U. of Texas at San Antonio, Alvarez College of Business Graduate Studies	Exhibitor
U. of Texas at Tyler Master of Science in Professional Accountancy, Soules College of Business	Exhibitor
UWorld	Podcast Sponsor and Exhibitor
Wipfli LLP	Exhibitor



Awards, Competitions and **Recognitions**

OUTSTANDING DEAN AWARD

Dr. Ed Bashaw has spent his career leading business schools with a focus on student success, faculty collaboration, and community impact. He served as dean of the School of Business and Technology at Emporia State University, and brings decades of experience as an educator and administrator—including prior deanships at Texas A&M–Texarkana and Arkansas Tech.

Dr. Bashaw, who was the first Bashaw male to graduate from college, began his career in industry before earning his Ph.D. in marketing and transitioning to higher education. He’s known for building programs that connect the classroom to the real world and for creating a supportive environment where students are encouraged to lead.

At Emporia State, Dr. Bashaw has been a vocal advocate for the Lambda Psi chapter of Beta Alpha Psi. He regularly attends meetings and events, helps amplify student accomplishments, and actively supports the chapter’s growth and visibility on campus. His encouragement has made a measurable difference in the chapter’s momentum and reach.

Dr. Bashaw’s leadership is defined by accessibility, integrity, and an unwavering belief in students’ potential. The 2025 Outstanding Dean Award recognizes his lasting contributions to both Beta Alpha Psi and the broader academic and professional communities.



Dr. Ed Bashaw

Dean of School of Business & Technology
Professor of Business Administration
Jones Distinguished Professor of School
of Business & Technology
*Nominated by the Lambda Psi chapter
Emporia State University*



“I am extremely humbled in receiving this prestigious award from Beta Alpha Psi. I retired this May after nineteen years as a business school dean. In looking back over my time as dean, I’ll most miss the relationships that I formed with faculty, staff, campus colleagues, and, most importantly, students. This is especially meaningful for me as I realize that I’m receiving this award because the faculty sponsor (Dr. Danya Mi) and BAP students collaborated to put together my nomination.”

MEDAL OF INSPIRATION SPONSORED BY AICPA FOUNDATION SINCE 2008

The Medal of Inspiration Award honors a student who has demonstrated exceptional resilience and achieved remarkable success in the face of significant personal challenges. This award celebrates the strength, determination, and inspiring accomplishments of those who have overcome adversity while exemplifying the values and spirit of Beta Alpha Psi.

Beta Alpha Psi proudly recognizes Kidus Alemu as the AICPA Foundation's 2025 Medal of Inspiration recipient for his extraordinary resilience and determination.

Now earning his bachelor's degree in accounting at the University of Massachusetts Amherst, Kidus has overcome exceptional obstacles with perseverance and purpose.

Born in Addis Ababa, Ethiopia, he began his college education amid a period of uncertainty and unrest. Despite significant disruption to his studies, Kidus remained steadfast in his goal to continue learning. He later relocated to the United States to pursue his education independently, managing full-time coursework alongside demanding work schedules.

In 2023, he earned a scholarship at Bunker Hill Community College, where he was able to reduce his work hours and excel—making the Dean's List, co-founding the Accounting, Business, and Economics Club, and securing a competitive internship at the Federal Reserve Bank of Boston.

Kidus's story is a powerful reminder of how courage and education can transform lives. He exemplifies the values Beta Alpha Psi seeks to uphold: integrity, persistence, and the drive to inspire others.



KIDUS ALEMU

Delta Nu Chapter

University of Massachusetts Amherst



In all honesty, I applied for this opportunity because I believed this award celebrates those who inspire others to keep moving forward. My path to education has been different, and to be recognized not just for overcoming hardship, but for moving forward with purpose, means more than words can express. This award reminds me that resilience matters. I'm grateful to everyone involved, and I hope my story inspires you to keep pushing forward."

PRESIDENT'S AWARD

Each year, the Beta Alpha Psi president recognizes individuals who have demonstrated extraordinary commitment and have gone above and beyond their responsibilities to make a meaningful impact on the organization. This recognition honors those whose dedication exemplifies the highest standards of service and leadership within Beta Alpha Psi.

Dori Danko, CPA, is an instructor of accounting in the Seidman College of Business at Grand Valley State University and was a dedicated Faculty Advisor to the Kappa Beta Chapter of Beta Alpha Psi for more than 20 years, beginning her role in 2001. She served as Chair of the Beta Alpha Psi Annual Meeting three times and has also served as a Midwest Chapter Advocate.

Dori earned her bachelor's degree from Michigan State University and an MBA from Grand Valley State University. Before transitioning to academia, she worked as an auditor with Coopers & Lybrand and later as a controller in private industry. A licensed CPA prior to teaching full time, she now focuses on financial accounting courses, with a strong interest in accounting ethics and reporting. She is also a half time Honors College faculty where she teaches financial reporting topics.

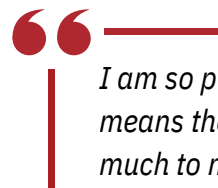
Beyond the classroom, Dori has shared her expertise through presentations at MICPA and Beta Alpha Psi events. She is widely regarded by students as supportive and approachable, known for providing clear expectations and helpful feedback.

Outside of her professional life, Dori enjoys time with her husband, two adult daughters, and friends.



DORI DANKO, CPA

Accounting Instructor
Grand Valley State University



I am so proud of receiving this award; it means the world to me. BAP has given so much to me over the past 24 years and the award symbolizes all of the involvement I participated in over the years. My BAP friendships and professional relationships continue to enhance my life and career. BAP provides a forum for educators and the accounting profession to merge and share ideas. This idea sharing then translates into better support for students. Thank you Beta Alpha Psi."

OUTSTANDING FACULTY ADVISORS SPONSORED BY RSM US LLP SINCE 2007

Faculty Advisors are instrumental to the success of Beta Alpha Psi chapters, dedicating countless hours to students' professional growth and development. Beta Alpha Psi and RSM US LLP proudly recognize four exceptional Faculty Advisors who have gone above and beyond their duties. Each honoree receives a plaque and a monetary award in appreciation of their extraordinary service and commitment.



JACOB CROWLEY, CPA, PH.D. CANDIDATE

Assistant Professor of Accounting
James F. Dicke College of Business Administration
*Nominated by the Mu Delta chapter
Ohio Northern University*



Receiving this is deeply meaningful to me. As a former student member and past president of the Mu Delta chapter, now serving as its advisor, this honor feels especially full circle. It affirms the impact of mentoring future professionals and reflects the dedication of our incredible students. I'm proud to give back to the same chapter that once shaped my own academic and professional journey."



DR. AMANDA MARCY, CPA

Assistant Professor, Department of Accounting
*Nominated by the Nu Kappa chapter
University of Scranton*



Serving as Scranton's Beta Alpha Psi faculty advisor for the past ten years has been both a significant responsibility and one of the most fulfilling and rewarding experiences of my career. I'm incredibly proud of all that the Nu Kappa chapter has achieved and truly grateful for the opportunity to mentor such motivated and talented students year after year."





SONIA SINGH, J.D., LL.M., CPA

Davis Family Faculty Fellow, Instructional Associate Professor
Nominated by the Upsilon chapter
University of Florida



I am truly honored and grateful to receive this award! As an alumna of the Upsilon Chapter, BAP holds a special place in my heart and played a pivotal role in shaping my career. Now, as faculty advisor, it's been rewarding to give back to the organization that helped guide my path. I've worked hard to inspire and support students, and I hope my contributions have meaningfully empowered their growth and professional success."



DR. JOHN WEBSTER, CA, CPA

Senior Lecturer, Accounting
Nominated by the Xi Sigma chapter
Swinburne University of Technology



I am incredibly honored to receive the 2025 Outstanding Faculty Advisor Award. Since 2016, it has been a privilege to support our Beta Alpha Psi students as they grow into thoughtful, capable, and ethical professionals. This recognition reflects the collective effort and dedication of our entire chapter at Swinburne. I am proud to be part of a global network that champions leadership, service, and academic excellence across the accounting, finance, and digital technology disciplines.

KPMG/BERNARD J. MILANO LIFETIME SERVICE AWARD

The Beta Alpha Psi KPMG/Bernard J. Milano Lifetime Service Award honors individuals whose extraordinary commitment and long-standing dedication have left a lasting impact on the organization. Recipients exemplify the values of Beta Alpha Psi through decades of service, leadership, and mentorship. Their enduring contributions continue to shape future professionals, ensuring that generations of students are guided, supported, and inspired by their example.

Dr. Teresa Conover, CPA, CIA, CFE, CGMA, (all inactive) is Emerita Professor of Accounting at the University of North Texas. Over her distinguished 35-year academic career, she taught at four universities, chaired two accounting departments, and directed Executive Programs for UNT's Brint Ryan College of Business. She earned 11 teaching awards, including the inaugural Paden Neeley Professorship for Excellence in Teaching. Her career also extended internationally as faculty in residence for Ernst & Young International in London and as a Visiting Scholar at the London School of Economics. Dr. Conover has served extensively in professional organizations, including the American Institute of Certified Public Accountants, the American Accounting Association, the International Association for Accounting Education & Research, Beta Gamma Sigma, and AACSB accreditation teams. She was President of Beta Alpha Psi from 2010–2011 and of the AAA International Accounting Section from 2000–2001. Her research, widely published in top journals, focused on internal auditing and international accounting. Beyond her scholarship, Dr. Conover is celebrated for her leadership, mentorship, and lifelong commitment to advancing accounting education worldwide.



DR. TERESA CONOVER, CPA, CIA, CFE, CGMA, (ALL INACTIVE)

Emerita Professor of Accounting
University of North Texas



It has been my privilege to work with Beta Alpha Psi for more than 40 years. The real reward has been watching students grow into confident professionals and leaders. This organization has given me opportunities to teach, to serve, and to contribute to a community that continues to elevate the accounting profession. I am humbled to be part of that legacy."

DEAN'S LIST AWARD WINNERS

Beta Alpha Psi students who qualified for their school's dean's list (or equivalent) and whose chapters could not fund travel to attend the 2025 Annual Meeting had the opportunity to receive a travel stipend from Beta Alpha Psi.

Dr. Eric Jack, former Dean of the Collat School of Business at the University of Alabama at Birmingham, awarded \$2,500 to enable these two students to attend the annual meeting.



BARDIA ROSTAMI

University of California, Irvine
Nu Pi chapter



BILLGATE AGYEKUM ASANTE

Central Connecticut State University
Xi Omicron chapter

BEST PRACTICES
SPONSORED BY DELOITTE LLP SINCE 2001



The Best Practices topics give members a chance to present their expertise on one of the topics for the year. Each of the winning teams from the four mid-year meetings competed for their winning topic. All U.S. mid-year first, second, and third place teams and all Oceania first and second place teams were invited to present at the 2025 Annual Meeting in San Antonio, TX.

IMPACTING CONNECTIONS IN YOUR CHAPTER

1st Place	Louisiana State University, Phi chapter
2nd Place	University of Auckland, The Auckland chapter
3rd Place	Florida State University, Beta Rho chapter

IMPACTING YOUR PROFESSION

1st Place	University of Central Arkansas, Theta Lambda chapter
2nd Place	University of North Florida, Xi Eta chapter
3rd Place	Southern Illinois University Carbondale, Gamma Zeta chapter

IMPACTING YOUR COMMUNITY

1st Place	Monash University, Xi Epsilon chapter
2nd Place	University at Buffalo, Zeta Theta chapter
3rd Place	University of South Florida, Delta Gamma chapter

LEADERSHIP AWARD
SPONSORED BY EY LLP SINCE 2007



The EY Leadership Award recognizes members who demonstrate exceptional leadership qualities, teamwork, and a commitment to excellence. EY understands the importance of effective leadership in building strong, successful teams. This award celebrates students who embody these leadership qualities, contributing significantly to their chapters and beyond.

1st Place	Case Western Reserve University, Pi chapter
2nd Place	University of Tennessee, Knoxville, Alpha Lambda chapter
3rd Place	University at Buffalo, Zeta Theta chapter
3rd Place	The University of Sydney, Lambda Omega chapter
3rd Place	University of Auckland, The Auckland chapter



PLATINUM CHALLENGE **SPONSORED BY KPMG SINCE 2009**



Sponsored by KPMG, this competition recognizes chapters that go above and beyond the requirements of top performance. Students showcase their creativity by producing a five-minute video that highlights their chapter's achievements or the value of Beta Alpha Psi membership.

Platinum Chapter status is the highest honor a chapter can earn, and only a select number are awarded each year. Recipients consistently embody the core values of Beta Alpha Psi: leadership, academic excellence, lifelong learning, service, and ethical behavior.

PLATINUM CHAPTERS

Appalachian State University, Epsilon Kappa chapter

California State University, Fresno, Gamma Omicron chapter

Florida International University, Eta Iota chapter

Iowa State University, Iota Beta chapter

Monash University, Xi Epsilon chapter

The University of Sydney, Lambda Omega chapter

University at Buffalo, Zeta Theta chapter

University of Central Florida, Epsilon Gamma chapter

University of Mississippi, Alpha Theta chapter

University of Nevada, Las Vegas, Theta Omicron chapter

GOLD CHAPTERS

School	Chapter
Auburn University	Epsilon Omicron
Auburn University at Montgomery	Xi Gamma
Ball State University	Zeta Omega
Bentley University	Theta Gamma
Boise State University	Zeta Psi
Bowling Green State University	Alpha Upsilon
Bradley University	Zeta Lambda
Brigham Young University	Gamma Alpha
California State University - East Bay	Epsilon Psi
California State University - Long Beach	Gamma Omega
California State University - Northridge	Epsilon Chi
California State University, Fullerton	Delta Beta
Case Western Reserve University	Pi
Central Connecticut State University	Xi Omicron
Clemson University	Zeta Rho
Cleveland State University	Delta Psi
College of Charleston	Mu Beta
Deakin University	Xi Kappa
Eastern Illinois University	Theta Omega
Eastern Washington University	Delta Sigma
Elon University	Lambda Xi
Fairfield University	Iota Psi
Fairleigh Dickinson University	Nu Sigma
Florida Atlantic University	Eta Tau
Florida Gulf Coast University	Mu Lambda
Florida State University	Beta Rho
Georgia Southern University	Zeta Delta
Gonzaga University	Iota Delta

School	Chapter
Hofstra University	Delta Psi
Idaho State University	Eta Lambda
Ithaca College	Mu Alpha
Jacksonville State University	Nu Phi
Kennesaw State University	Iota Tau
Kent State University	Beta Psi
King's College	Omicron Epsilon
Lamar University	Zeta Tau
Louisiana State University	Phi
Louisiana Tech University	Alpha Chi
Loyola University Maryland	Eta Upsilon
Manhattan University	Lambda Pi
Marist University	Lambda Eta
Marquette University	Psi
Marshall University	Kappa Phi
Middle Tennessee State University	Zeta Gamma
Minnesota State University Mankato	Nu Chi
Missouri State University	Theta Pi
Murray State University	Epsilon Nu
North Carolina A&T State University	Zeta Sigma
North Carolina State University	Iota Omega
Northern Arizona University	Delta Upsilon
Nova Southeastern University	Omicron Gamma
Ohio Northern University	Mu Delta
Ohio University	Alpha Kappa
Oklahoma State University	Chi
Oregon State University	Epsilon
Pace University	Iota Lambda

GOLD CHAPTERS

School	Chapter
Robert Morris University	Xi Delta
Rutgers University-New Brunswick	Theta Mu
Salisbury University	Iota Pi
Sam Houston State University	Kappa Mu
Seattle University	Delta Eta
Siena College	Nu Xi
Southeast Missouri State University	Mu Xi
Southern Illinois Univ. at Carbondale	Gamma Zeta
Stonehill College	Mu Omega
Stony Brook University	Omicron Alpha
SUNY Oswego	Lambda Zeta
Swinburne University of Technology	Xi Sigma
Temple University	Alpha Phi
Texas State University	Kappa Eta
The University of Alabama	Alpha Beta
The University of Melbourne	Xi Lambda
The University of Southern Mississippi	Zeta Mu
The University of Tampa	Lambda Beta
The University of Texas Rio Grande Valley	Xi Phi
Truman State University	Kappa Nu
University of Akron	Gamma Eta
University of Alabama at Birmingham	Delta Chi
University of Arizona	Beta Omicron
University of Arkansas	Alpha Iota
University of Auckland	The Auckland
University of California, Irvine	Nu Pi
University of Central Arkansas	Theta Lambda
University of Florida	Upsilon

School	Chapter
University of Georgia	Beta Upsilon
University of Hawaii at Manoa	Delta Theta
University of Idaho	Iota Gamma
University of Illinois	Alpha
University of Kentucky	Alpha Mu
University of Louisiana at Lafayette	Kappa Theta
University of Massachusetts Amherst	Delta Nu
University of Michigan - Flint	Eta Xi
University of Missouri - St. Louis	Gamma Psi
University of Nebraska - Lincoln	Delta Omicron
University of Nebraska at Omaha	Gamma Kappa
University of North Alabama	Xi Zeta
University of North Carolina at Charlotte	Eta Alpha
University of North Carolina at Greensboro	Zeta Chi
University of North Carolina Wilmington	Iota Alpha
University of North Dakota	Zeta
University of North Georgia	Nu Gamma
University of North Texas	Beta Pi
University of Oklahoma	Iota Nu
University of Oregon	Beta
University of San Diego	Zeta Kappa
University of Scranton	Nu Kappa
University of South Carolina Upstate	Xi Alpha
University of South Dakota	Theta Upsilon
University of South Florida	Delta Gamma
University of Southern Indiana	Lambda Mu
University of Technology Sydney	Upsilon Tau Sigma
University of Tennessee at Chattanooga	Eta Kappa

GOLD CHAPTERS

School	Chapter
University of Tennessee, Knoxville	Alpha Lambda
University of Texas at Tyler	Mu Kappa
University of Utah	Epsilon Xi
University of Washington	Delta
University of West Florida	Iota Phi
University of Wisconsin - Milwaukee	Eta Theta
University of Wisconsin - Whitewater	Epsilon Rho
Utah State University	Delta Omega
Valdosta State University	Mu Zeta

School	Chapter
Virginia Commonwealth University	Epsilon Zeta
Washington State University	Delta Epsilon
Washington State University - Vancouver	Nu Theta
Washington University in St. Louis	Nu Iota
West Chester University	Nu Zeta
Western Illinois University	Zeta Beta
Western Kentucky University	Eta Omicron
Western Michigan University	Gamma Rho
Western Washington University	Theta Phi

SILVER CHAPTERS

School	Chapter
Clark University	Omicron Beta
Colorado State University	Gamma Tau
Creighton University	Alpha Nu
Eastern Michigan University	Epsilon Omega
Florida Southern College	Xi Mu
Fordham University	Alpha Omega
Georgia College & State University	Lambda Phi
Kansas State University	Epsilon Theta
Mississippi State University	Beta Kappa
New York University	Mu
Nicholls State University	Iota Sigma
Quinnipiac University	Nu Alpha
San Diego State University	Beta Eta
San Jose State University	Gamma Xi
St. John's University	Eta Mu

School	Chapter
Stetson University	Lambda Delta
The University of Memphis	Gamma Chi
The University of New Mexico	Theta Xi
University of Arkansas at Little Rock	Epsilon Pi
University of Dayton	Eta Zeta
University of Denver	Alpha Zeta
University of Louisiana at Monroe	Eta Sigma
University of Massachusetts Dartmouth	Mu Phi
University of Michigan-Dearborn	Kappa Sigma
University of Nevada - Reno	Zeta Iota
University of Southern California	Iota
University of Texas at El Paso	Theta Beta
University of Toledo	Gamma Epsilon
University of Wisconsin Oshkosh	Iota Rho
Winthrop University	Kappa Rho

PROJECT RUN WITH IT (PRWI) SPONSORED BY MOSS ADAMS X BAKER TILLY



Project Run with It (PRWI) involved 69 Beta Alpha Psi chapter members working together during the Annual Meeting to develop solutions to real-life business problems of actual not-for-profit (NFP) organizations. Students worked in teams to develop a formal presentation showcasing their solution to the business issues the NFPs presented in their “request for proposal” for consulting services.

BETA ALPHA PSI CASE A WINNER

TEAM A-1

Increasing Meaningful Member Engagement

Alondra Barajas	The University of Texas Rio Grande Valley, Xi Phi chapter
Jackson Gambrell	College of Charleston, Mu Beta chapter
Abigail Mills	The University of Sydney, Lambda Omega chapter
Andrea Sharp	Central Connecticut State University, Xi Omicron chapter

BETA ALPHA PSI CASE B WINNER

TEAM B-3

Improving Support for and Connections with Alumni

Cris Escandor	The University of Auckland, The Auckland chapter
Isabella Fairleigh	Nicholls State University, Iota Sigma chapter
David Farnham	University of Missouri, St. Louis, Gamma Psi chapter
Isaac Scarborough	University of Arkansas, Alpha Iota chapter

TXCPA (TEXAS SOCIETY OF CPAS) CASE C WINNER

TEAM C-2

Creating a Strategic Plan to Increase New Membership and Membership Engagement and Marketing Plan to Promote the Profession

Benjamin Cameron	Ohio University, Alpha Kappa chapter
Olivia Rose	University of Tennessee, Knoxville, Alpha Lambda chapter
Nicholas Zimmerly	Boise State University, Zeta Psi chapter

VITA AWARDS RECOGNIZED BY IRS



The Volunteer Income Tax Assistance (VITA) Program offers free tax help to people who make \$67,000 or less and need assistance in preparing their tax returns. This is an excellent opportunity for Beta Alpha Psi chapters to gain exposure on campus and in the community, while also gaining valuable practical experience in income tax preparation.

IRS VITA SUPERIOR

Highest returns prepared and/or 100%-chapter members participation

School	Chapter
California State University Long Beach	Gamma Omega chapter
California State University, Northridge	Epsilon Chi chapter
Clark University	Omicron Beta chapter
Loyola University Maryland	Eta Upsilon chapter
Marshall University	Kappa Phi chapter
San Francisco State University	Beta Chi chapter
University at Buffalo	Zeta Theta chapter
University of Missouri – St. Louis	Gamma Psi chapter

IRS VITA GOLD

Highest returns prepared and/or 100%-chapter members participation

School	Chapter
California State University, East Bay	Epsilon Psi chapter
Hofstra University	Delta Pi chapter
Ithaca College	Mu Alpha chapter
Murray State University	Epsilon Nu chapter
University of California Irvine	Nu Pi chapter
University of Massachusetts Amherst	Delta Nu chapter
University of Oregon	Beta chapter
University of West Florida	Iota Phi chapter
Western Washington University	Theta Phi chapter

IRS VITA PLATINUM

Over 1,000 returns prepared with multiple VITA programs or volunteerism

School	Chapter
Boise State University	Zeta Psi chapter
Creighton University	Alpha Nu chapter
SUNY Oswego	Lambda Zeta chapter
University of Missouri – Kansas City	Epsilon Delta chapter
University of Utah	Epsilon Xi chapter

IRS VITA SILVER

Highest returns prepared and/or 100%-chapter members participation

School	Chapter
Florida State University	Beta Rho chapter
Idaho State University	Eta Lambda chapter
Middle Tennessee State University	Zeta Gamma chapter
Stetson University	Lambda Delta chapter
Tennessee State University	Mu Theta chapter
University of Central Arkansas	Theta Lambda chapter
University of North Georgia	Nu Gamma chapter
University of Toledo	Gamma Epsilon chapter
Utah State University	Delta Omega chapter
Washington University in St. Louis	Nu Iota chapter



Recognition

HONORING THE CONTRIBUTIONS OF OUR SPONSORS

Competitions and awards are essential elements of the Beta Alpha Psi experience, fostering professional growth, leadership, and academic excellence. These enriching opportunities are made possible through the generous support and enthusiasm of our sponsoring Professional Partners. We extend our sincere gratitude to the following sponsors, whose invaluable contributions have made these impactful experiences possible for our members.



\$11,000 to PRWI winning teams
\$21,000 for program expenses



To Platinum status chapters



To Best Practices chapters (mid-year and international)



To Outstanding Faculty Advisor Award recipients



\$7,500 Medal of Inspiration
\$5,000 Hardship Travel Grants (10 students)
\$3,150 Membership Grants (42 students)



To chapters placing in Leadership Awards





BETA ALPHA PSI INTERNATIONAL

11161 E State Rd 70

Suite 110-608

Lakewood Ranch, FL 34202

919-402-4044

bap@bapeo.org